



# FARM MACHINERY TESTING CENTRE

Department of Agricultural Engineering,  
UNIVERSITY OF AGRICULTURAL SCIENCES, BANGALORE  
College of Agriculture, GKVK, Bangalore -560065

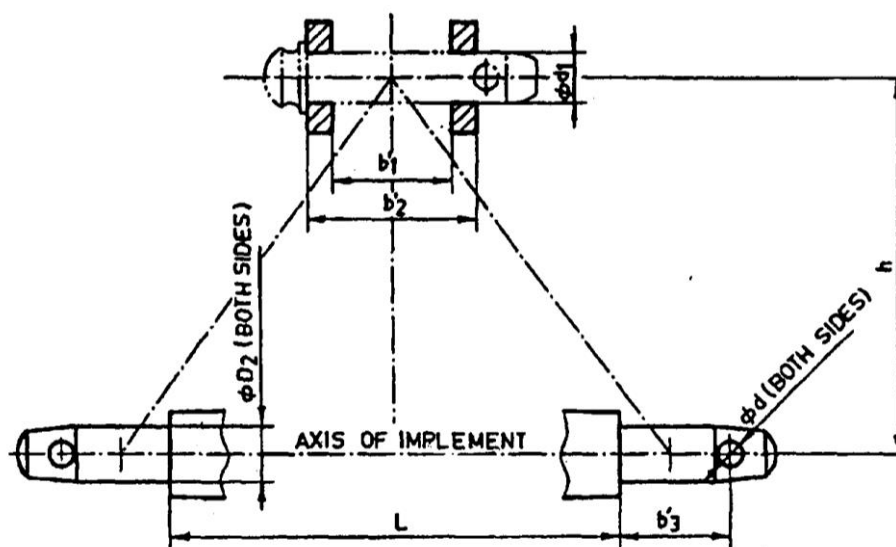
## SPECIFICATION SHEET OF TRACTOR MOUNTED LEVELLER

1.0	<b>General</b>		:	
	Name of machine		:	
	Name and address of manufacturer		:	
	Name and address of applicant		:	
	Selling price in India		:	
2.1	<b>Main frame:</b>			
	a)	Constructional details	:	
	b)	No. and size of bolts (mm) for tightening square section to the Mould board frame	:	
2.2	<b>Mould board frame:</b>			
	a)	Constructional details	:	
	b)	Shape	:	
	c)	Size of material (mm)	:	
2.2.1	<b>Mould board (tyres):</b>			
	a)	Constructional details	:	
	b)	No. and size (mm)	:	
2.2.2	<b>Side plate:</b>			
	a)	Constructional details	:	
	b)	No. and size (mm)	:	
2.3	<b>Mould board:</b>			
	a)	Constructional details	:	
	b)	Size (mm)	:	
	c)	Volume of mould board (cu. m.)	:	
2.4	<b>Cutting blade</b>			
	a)	Material and size (mm)	:	
	b)	Beveled edge thickness (mm)	:	
	c)	Width of beveled edge (mm)	:	
	d)	No. and size (mm) of holes on the blade	:	
	e)	No., size and types of bolts for fitting blade (mm)	:	
	f)	Method of fixing	:	
2.5	<b>Blade tilt or vertical angle device:</b>			
	a)	Constructional details	:	
	b)	No. and size (mm) of holes on mast rear flats	:	
	c)	Hole spacing (mm)	:	
	d)	Range of blade tilt angle from ground level (GL) (degree)	:	
	e)	Size of U-channel (mm)	:	
	f)	No. and size (mm) of holes on U-channel	:	
	g)	No. and size (mm) of bolt for tightening the mast flat	:	

2.6	<b>Horizontal angling device</b>		:	
2.7	<b>Pitch adjusting screw</b>		:	
2.8	<b>Scarifier</b>		:	
2.9	<b>Stabilizer kit</b>		:	
2.10	<b>Type of hitch and its details :</b>			
	a)	Type and material	:	Three point linkage, MS Flat, 62.5 x 12
	b)	Shape	:	Pyramid

### Specification of Hitch Pyramid As per IS: 4468-1997 (Part-I)

Sr.	Dimension (Refer Fig.1)	Description	Measurement
Upper Hitch attachments			
1	$d_1$	Diameter of hitch pin hole	
2	$b'_1$	Width between inner faces of yoke	
3	$b'_2$	Width between outer faces of yoke	
Lower hitch points			
4	$D_2$	Dia. of hitch pin	
5	$b'_3$	Linch pin hole distance	
6	$l$	Lower hitch point span	
Other dimensions			
	Diameter of linch pin hole		
7	$d$	For upper hitch pin	
8		For lower hitch pin	
9	$h$	Mast height	



Implement Hitch Attachment

<b>3</b>	<b>Overall Dimensions (mm)</b>			
	a)	Length	:	
	b)	Width	:	
	c)	Height	:	
	d)	Mass, (kg)	:	
<b>4</b>	<b>Color of implement</b>		:	
<b>5</b>	<b>Details of Material of Construction :</b>			

Sr.	Name of components	Material
1	Frame	Conforms
2	Strut hitch	--
3	Hitch pin	Does not conform
4	Pitch adjusting screw	--
5	Mould board frame	Conforms
6	Side plate	Conforms
7	Mould board	Conforms
8	Scarifier	--

Place:

Date:

Signature : \_\_\_\_\_

Name : \_\_\_\_\_

Designation: \_\_\_\_\_