



FARM MACHINERY TESTING CENTRE

Department of Agricultural Engineering,
UNIVERSITY OF AGRICULTURAL SCIENCES, BANGALORE
College of Agriculture, GKVK, Bangalore -560065

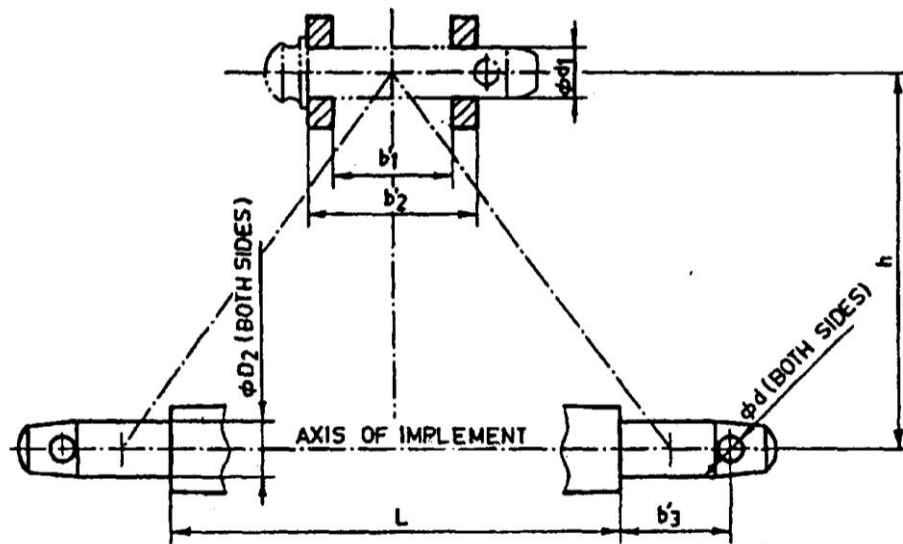
SPECIFICATION SHEET OF TRACTOR DRAWN BUND FORMER

| | | | | |
|-----|----------------------------------|--|---|-----|
| 1.0 | General | | : | |
| | Name of machine | | : | |
| | Name and address of manufacturer | | : | |
| | Name and address of applicant | | : | |
| | Selling price in India | | : | |
| 2.1 | Main frame: | | | |
| | a) | Type and material | : | |
| | b) | Size (mm) | : | |
| | c) | Ground clearance (mm) | : | |
| 2.2 | Cutting blade | | | |
| | a) | Type and material | : | |
| | b) | Number | : | |
| | c) | Size (mm) | : | |
| | d) | Thickness (mm) | : | |
| | e) | Distance from centre to centre of blades (mm) | : | |
| 2.3 | Forming boards : | | | |
| | a) | Material | : | |
| | b) | Shape of board | : | |
| | c) | Number of boards | : | |
| | d) | Distance between forming boards (mm) | : | |
| | | Front side | : | |
| | | Rear side | : | |
| | e) | Top opening of forming boards (mm) | : | |
| | | Front side | : | |
| | | Rear side | : | |
| | f) | Max. width between forming boards at rear (mm) | : | |
| | | | | LHS |
| | | | | RHS |
| | g) | Length (mm) | : | |
| | h) | Width (mm) | : | |
| | i) | Thickness (mm) | : | |
| | j) | Total no. of holes | : | |
| | k) | Dia. of hole (mm) | : | |
| | l) | Hole to hole distance (mm) | : | |
| | | Horizontal | : | |
| | | Vertical | : | |
| | m) | Width of cutting edge (mm) | : | |
| | n) | Length of cutting edge (mm) | : | |

| | | | | |
|-----|--|-------------------|---|--|
| | o) | Method of fixing | : | |
| 2.4 | Forming board braces | | | |
| | a) | Type and material | : | |
| | b) | No. of support | : | |
| | c) | Method of fixing | : | |
| 2.5 | Type of hitch and its details : | | | |
| | a) | Type and material | : | |
| | b) | Shape | : | |

Specification of Hitch Pyramid As per IS: 4468-1997 (Part-I)

| Sr. | Dimension (Refer Fig.1) | Description | Measurement |
|-------------------------|----------------------------|-----------------------------------|-------------|
| Upper Hitch attachments | | | |
| 1 | d_1 | Diameter of hitch pin hole | |
| 2 | b'_1 | Width between inner faces of yoke | |
| 3 | b'_2 | Width between outer faces of yoke | |
| Lower hitch points | | | |
| 4 | D_2 | Dia. of hitch pin | |
| 5 | b'_3 | Linch pin hole distance | |
| 6 | l | Lower hitch point span | |
| Other dimensions | | | |
| | Diameter of linch pin hole | | |
| 7 | d | For upper hitch pin | |
| 8 | | For lower hitch pin | |
| 9 | h | Mast height | |



Implement Hitch Attachment

| | | | | |
|---|--------------------------------|------------|---|--|
| 3 | Overall Dimensions (mm) | | | |
| | a) | Length | : | |
| | b) | Width | : | |
| | c) | Height | : | |
| | d) | Mass, (kg) | : | |
| 4 | Color of implement | | | |
| | | | : | |

| | | | |
|----------|--|---------------------------|-----------------|
| 5 | Details of Material of Construction : | | |
| | | | |
| | Sr. | Name of components | Material |
| | 1 | Frame | |
| | 2 | Hitch assembly | |
| | 3 | Forming boards | |
| | 4 | Adjustment level | |
| | 5 | Cutting blade | |
| | 6 | Hitch pin | |

Place:

Date:

Signature : _____

Name : _____

Designation: _____