

**UNIVERSITY OF AGRICULTURAL SCIENCES, BENGALURU &
INDIAN METEOROLOGICAL DEPARTMENT**



**GRAMIN KRISHI MAUSAM SEWA
AMFU, OFRS, NAGANAHALLI,
MYSURU – 570003**



Date: 11-07-2025

AGRO-ADVISORY BULLETIN FOR CHAMARAJANAGARA DISTRICT

Issued jointly by, UAS, Bengaluru & Indian Meteorological Department

Past Weather Data

Parameter	08.07.2025	09.07.2025	10.07.2025	11.07.2025
Rainfall (mm)	0	1	0.5	0
Max. Temp. (°C)	29.6	27.2	28.5	28.1
Min. Temp. (°C)	21.6	21.9	21.2	21.4
Sky condition (Octas)	-	-	-	-
Relative humidity (%) 0830 hours	83	87	93	88
Relative humidity (%) 1730 hours	56	63	60	60
Wind Speed (km/h)	-	-	-	-
Wind Direction	-	-	-	-

Weather forecast for the next five days (From 12-07-2025 to 16-07-2025)

Parameter	12.07.2025	13.07.2025	14.07.2025	15.07.2025	16.07.2025
Rainfall (mm)	1	1	2	1	4
Max. Temp. (°C)	31	31	32	31	32
Min.Temp. (°C)	21	21	21	21	21
Sky condition (Octas)	4	4	5	4	6
Relative humidity (%) 0830 hours	86	86	85	84	85
Relative humidity (%) 1730 hours	57	58	59	56	57
Wind Speed (kmph)	12	12	10	8	8
Wind Direction	360	272	360	263	263
Weather Warning	Gusty wind	Gusty wind	Gusty wind	-	-

*GW - Gusty wind, TSH – Thunderstorm

Forecast Summary

As forecast received from IMD, partially cloudy sky with **very light rainfall** may be expected from 12.07.2025 to 16.07.2025 in Chamarajanagara district. The day temperature is expected to be 31-32°C & night temperature is expected 21°C. The relative humidity in the morning hours is expected to be 84-86% & afternoon relative humidity is expected to be in the range of 56-59 %. Wind speed expected to be 08-12 km/ hr.

General Advisory:

- Irrigation:

- Since only very light rainfall is expected, farmers are advised to **continue irrigation** in all **field crops** and **horticultural crops** based on crop stage and soil moisture.
- Use **drip or sprinkler systems** if available to conserve water.
- 2. **Weed Management:**
 - Conduct **weeding** operations as fields are relatively dry.
 - Apply **pre-emergent herbicides** where sowing has recently been completed.
- 3. **Fertilizer Application:**
 - Suitable time for **top dressing of nitrogen** (e.g., urea) in standing crops.
 - Ensure **adequate soil moisture** before fertilizer application.
- 4. **Plant Protection:**
 - Keep watch for **pest and disease incidence**, especially in vegetable crops.
 - Ensure timely application of **recommended pesticides/fungicides**.
- 5. **Horticulture Crops:**
 - **Irrigate fruit orchards** (banana, mango, sapota, etc.) as per schedule.
 - Perform **mulching** to retain soil moisture and suppress weed growth.
- 6. **Livestock:**
 - Ensure **clean drinking water** for animals.
 - Provide **shade/shelter** during mid-day heat.
- 7. **Post-harvest:**

➤ Store harvested produce (grains/fruits) in **dry and ventilated** areas to avoid spoilage due to high humidity.

SMS Advisory:

Very light rain for 5 days. Irrigate field & horticulture crops. Carry out weeding, fertilizer, pest mgmt. Ensure livestock water & shelter.

Crops and Suitable Varieties for Sowing in July

Paddy (Rice)

- **General Sowing:** MSN-99
- **Late June (3rd-4th week):** BR-2655, Jaya
- **Aerobic Paddy:** Daksha (KMP-175), Onnasiri (MAS-26), Sharada (MAS-946), Anagha (ARB-6), Rashi

Ragi (Finger Millet): Indaf-8, MR-1, MR-6, L-5, KMR-301, GPU-45, KMR-316

Maize (Shaktiman Maize): CSH-5, CSH-9

Pearl Millet (Musuku Jola): Hema, Nithyashree, MAH-14-5, MAH-14-138, MAH-15-84

Popcorn: Amber

Bajra (Pearl Millet): WCC-75, PHVB-910

- **Late June (3rd-4th week):** ICTP-8203, SMV-221, MH-946 (GHB-558)

Foxtail Millet (Navane): PS-4, SIA-326, GPUF-3

Horsegram (Haraka): RBK-155, GPUK-3

Little Millet (Same): CO-2, OLM-203, GPUL-6, GPUL-11

Proso Millet (Oodalu): DHBM-93-3

Kodo Millet (Korale): GPUBT-2

Red Gram (Pigeon Pea / Togari): BRG-1, BRG-2, BRG-3, BRG-4, BRG-5, ICP-7035, TTB-7, Hyderabad-3C

Groundnut (Nelekadale): GKVK-5, KCG-6 (Chintamani-6), GPBD-4, ICGV-91114, JL-24, TMV-2, GKVK-27

Sunflower: KBSH-41, 90, 44, 53, 78, 85

Soybean (Soya Avare): MAUS-2 (Pooja), Karune (vegetable soybean), KBS-23

Cotton: DCS-9 (Jyoti), 48-1 (Jwala)

- **Hybrid Varieties:** DCH-177, GCH-4, 30.N.23-66

Sesame (Hucchellu) - 4th week of June: KBN-1, No.71, KBN-2, 52: 2.2-62175, 2.2-86032, 2.2.A.2-18061

Horticultural Crops

- **Vegetables:** Tomato, Potato, Brinjal, Chilli, Cabbage, Radish, Knol-khol, Carrot, Onion
- **Fruits:** Mango, Banana, Lime, Guava, Sweet lime, Sapota, Papaya, Pomegranate, Pineapple, Cashew
- **Spices:** Garlic, Ginger, Turmeric, Cardamom

Fodder Crops

- **Sorghum (Fodder Maize):** JS-SF-3
- **Cowpea (Fodder):** MF-09-01, MF-08-14, 2-09-03
- **Napier-Bajra Hybrid Grass:** PBN-342

Category	Advisory
Livestock	Provide clean and fresh drinking water regularly due to moderate temperatures. Ensure well-ventilated, dry, and shaded shelters to protect animals from humidity and mild rainfall. Monitor animals for signs of respiratory issues due to humid conditions.
Poultry	Keep poultry sheds dry and well-ventilated. Avoid overcrowding to reduce stress and disease risk during humid and rainy days. Provide clean water and balanced feed during cooler morning and evening hours. Maintain hygiene to prevent fungal and bacterial infections.

Recommendations to the farmers:-**Weather based advisory**

Crop	Stage	Advisory Based on Forecast
Paddy	Kharif- Nursery preparation	<ul style="list-style-type: none"> - Ensure proper drainage in nursery fields due to light rainfall and high humidity. - Avoid nursery activities during gusty wind periods. - Prepare raised beds with bunds to prevent waterlogging.
Maize	Vegetative	<ul style="list-style-type: none"> - Light rainfall supports growth; continue intercultural operations. - Provide staking/support to prevent lodging from strong winds. - Monitor for stem borer and apply control measures if needed.
Tomato	Fruit formation	<ul style="list-style-type: none"> - High humidity may promote fungal diseases; apply preventive fungicides. - Avoid overhead irrigation; use mulching to retain soil moisture. - Provide staking to prevent wind damage.
Chilli	Fruit formation	<ul style="list-style-type: none"> - Maintain field hygiene to prevent fruit rot. - Ensure good drainage and avoid water stagnation. - Monitor and manage thrips and mites.
Banana	Fruit development	<ul style="list-style-type: none"> - Provide propping or support to prevent wind damage. - Monitor for foliar diseases like Sigatoka; apply fungicides as needed. - Maintain proper soil moisture.
Black gram, Green gram, Red gram, Field bean, Cowpea	Vegetative	<ul style="list-style-type: none"> - Carry out weeding and earthing-up after rainfall. - Ensure proper drainage to prevent root diseases. - Keep watch for sucking pests under humid conditions.
Sugarcane	Vegetative	<ul style="list-style-type: none"> - Light rainfall beneficial for growth; continue fertilization schedule. - Monitor for early signs of pests and diseases. - Use windbreaks if the crop is in open areas.

Vegetable crops (general)	Various stages	<ul style="list-style-type: none"> - Protect young plants from lodging due to wind. - Harvest mature produce timely to avoid losses. - Apply preventive sprays for fungal diseases due to high humidity and cloudy skies.
----------------------------------	----------------	--

Livestock, Poultry, and Sericulture Advisory	
Sector	Weather-Based Advisory
Livestock	Ensure clean, shaded, and well-ventilated shelters to prevent heat and humidity stress. Provide plenty of clean drinking water . Use fans if possible. Avoid grazing during midday heat . Supplement with mineral mixture and salt licks to maintain animal health. Regularly check hooves and shelter hygiene due to increased moisture.
Poultry	Maintain proper cross-ventilation and ensure adequate space in sheds to avoid crowding. Sprinkle water around sheds to reduce temperature. Provide cool, clean water with electrolytes . Feed birds during early morning and evening . Ensure dry bedding to prevent fungal issues due to humidity.
Sericulture	Maintain optimal rearing room temperature (26–28°C) and humidity (75–80%) through humidifiers or water sprinkling . Avoid overcrowding of worms. Provide well-moistened mulberry leaves , and protect mulberry gardens from rain damage using proper drainage and partial shade. Monitor for fungal diseases due to changing humidity.

Recommendation to farmers		
Crop specific advisory:		
Crop	Stage	Advisory
Maize fall army worm	Tasseling stage	<ul style="list-style-type: none"> ✓ Handpick and destroy egg masses and larvae. ✓ Use predators like <i>Trichogramma pretiosum</i> or parasitoids like <i>Telenomus remus</i>. ✓ Apply <i>Metarhizium anisopliae</i> or <i>Beauveria bassiana</i>. ✓ Spray Chlorantraniliprole 18.5% SC @ 0.4 ml/l or Emamectin benzoate 5% SG @ 0.4 g/l. Avoid excessive nitrogen application.
Coconut rugose whitefly	Vegetative stage	<ul style="list-style-type: none"> ✓ Prune and burn infested leaves. ✓ Release <i>Encarsia guadeloupae</i> parasitoids. Conserve natural predators like ladybird beetles (<i>Cryptolaemus montrouzieri</i>). ✓ Spray Neem oil 1% or use Acephate 75 SP @ 1 g/l as a spot application if infestation is severe.
Chilli leaf curl virus	Fruit formation stage	<ul style="list-style-type: none"> ✓ Use virus-free seeds and resistant varieties. Maintain proper spacing and avoid overlapping. ✓ Remove and destroy infected plants. Use yellow sticky traps to monitor whitefly populations. ✓ Spray Imidacloprid 17.8% SL @ 0.5 ml/l or Thiamethoxam 25 WG @ 0.3 g/l.
Tomato Early and late blight of tomato	Flowering	For late blight of tomato 15 days prior to transplanting Trichoderma and Pseudomonas enriched compost may be incorporated to the soil. For early blight control spray 2.0 g. Mancozeb 75 WP

		OR 2.0 g. Maneb OR 2.0 g. Metalaxyl- MZ 72WP. OR 2.0 g. Dimethomorph + polyram/lit. water. For control of late blight spray 2.0 g. Metalaxyl - MZ 72WP. OR 2.0 g. Fosetyl al 80 WP OR 2.0 g. Dimethomorph + polyram in a lit. water, 5 weeks after transplanting. Repeat the spray 7th, 9th and 11th weeks after transplanting. 200- 250 lit. spray solution required/acre/spray.
--	--	---

Block level weather forecast (From 12-07-2025 to 16-07-2025)

Chamarajanagara

Parameter	12.07.2025	13.07.2025	14.07.2025	15.07.2025	16.07.2025
Rainfall (mm)	1.5	1	1.6	1.2	4.1
Max. temp (°C)	29.5	29.2	28.4	27.1	27.7
Min.Temp (°C)	20.8	21	21.1	20.8	20.7
Sky condition (Octas)	5	7	7	8	8
Relative humidity (%) 0830 hours	88.6	87.1	82.5	85.1	87.7
Relative humidity (%) 1730 hours	46.8	48.3	48.8	53.5	52.4
Wind Speed (kmph)	10.6	14.9	15	16.3	13.8
Wind Direction	287.8	278.3	281	277.6	276

Gundlupete

Parameter	12.07.2025	13.07.2025	14.07.2025	15.07.2025	16.07.2025
Rainfall (mm)	1.3	1	1.5	0.9	6
Max. temp (°C)	28.2	28.1	27.2	26	26.5
Min.Temp (°C)	20.6	20.7	20.8	20.6	20.2
Sky condition (Octas)	5	7	7	7	8
Relative humidity (%) 0830 hours	88.1	87.2	83.6	84.9	87.9
Relative humidity (%) 1730 hours	53.1	51.8	53.5	58.6	56.5
Wind Speed (kmph)	12.6	16.7	17	18.2	16.8
Wind Direction	268.4	263.8	265.1	260.9	260.1

Kollegala

Parameter	12.07.2025	13.07.2025	14.07.2025	15.07.2025	16.07.2025
Rainfall (mm)	1.9	1.5	3.8	1.3	2
Max. temp (°C)	30	29.7	29	27.4	28
Min.Temp (°C)	21.2	21.5	21.2	21.2	21.1

Sky condition (Octas)	5	7	7	8	8
Relative humidity (%) 0830 hours	87.9	85.8	85.4	86.4	88.9
Relative humidity (%) 1730 hours	46.9	48.1	49.1	55.2	52.7
Wind Speed (kmph)	10.1	13.9	15	16.2	14.2
Wind Direction	253.5	253.4	259	257.2	253.8

Yelandur					
Parameter	12.07.2025	13.07.2025	14.07.2025	15.07.2025	16.07.2025
Rainfall (mm)	2.1	1.7	5	1.2	2.9
Max. temp (°C)	29.8	29.4	28.8	27	27.7
Min.Temp (°C)	21.1	21.2	21.2	21.1	20.9
Sky condition (Octas)	5	7	7	8	8
Relative humidity (%) 0830 hours	88.3	86.9	85.5	85.6	88.4
Relative humidity (%) 1730 hours	47.5	49	49.6	55.9	52.9
Wind Speed (kmph)	9.2	13.4	14.5	16.1	13.7
Wind Direction	258.7	256	262.9	259.7	256.3

Hanur					
Parameter	12.07.2025	13.07.2025	14.07.2025	15.07.2025	16.07.2025
Rainfall (mm)	3	2.5	4.2	1	1.9
Max. temp (°C)	29.2	28.7	28	26.5	27.2
Min.Temp (°C)	20.6	20.5	20.7	20.7	20.2
Sky condition (Octas)	5	7	7	8	8
Relative humidity (%) 0830 hours	89.4	87	85.1	84.5	88.8
Relative humidity (%) 1730 hours	45.7	48.3	48.7	54.5	51
Wind Speed (kmph)	10.1	13	14.8	15.5	14.8
Wind Direction	265.9	266.8	360	266	265.8

- Download “**DAMINI**” app to get early warning on lightening and take precautions based on the alert given by the application.
- Kindly download “**MAUSAM**” APP for location specific forecast & warning & “**MEGHDOOT**” APP for Agromet advisory
- This information is available in the website: mausam.imd.gov.in

For any information farmers can contact **Dr. C. Ramachandra**, Senior Farm Superintendent/
Dr. Sumanth Kumar.G.V, Technical officer over phone No. 0821-259126/ 9535345814.

AMFU of IMD,
Naganahalli, Mysuru

वास्तविकवर्षातथाविस्तारितअवधिपूर्वानुमान
Realized Rainfall and Extended Range Forecast
(वर्षाऔरतापमान)
(Rainfall and Temperature)

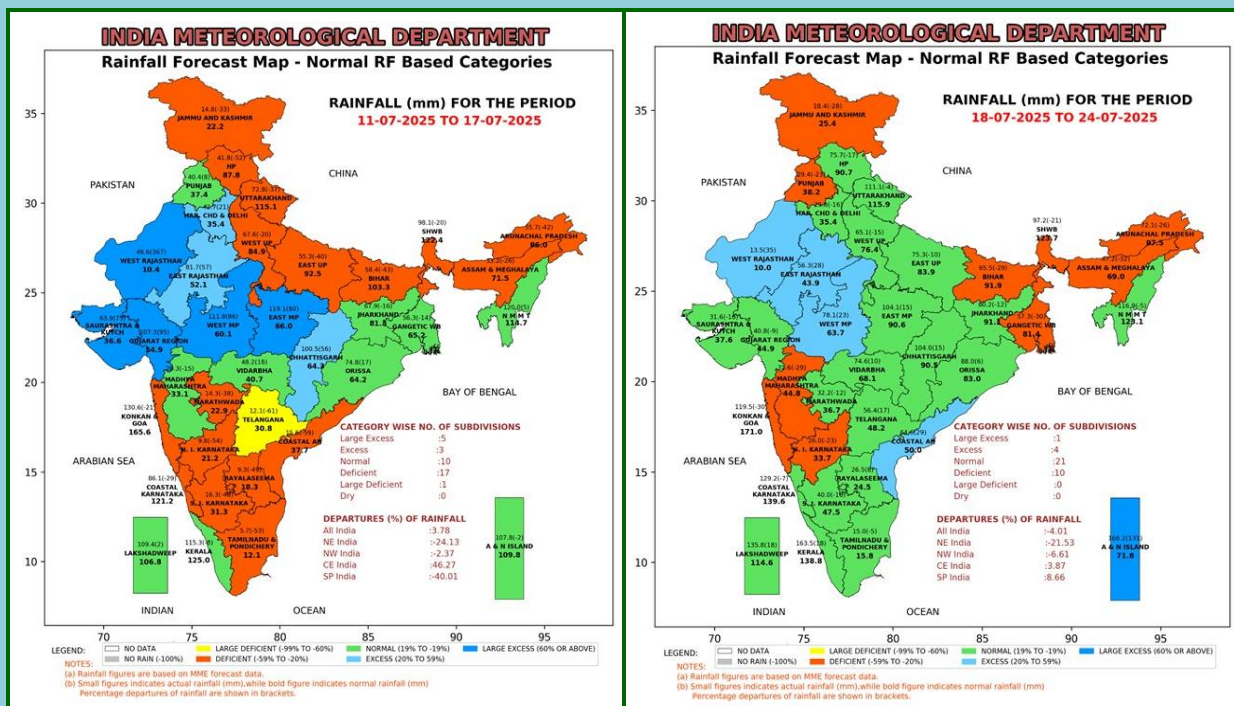
Realized Rainfall

(26th June to 09th July, 2025)



Extended Range Forecast System

Rainfall forecast maps for the next 2 weeks (IC- 09th July, 2025)
(11th to 24th July, 2025)



- **Week1(11.07.2025 to 17.07.2025):** Rainfall is likely to be above normal over Central India, Gujarat, Rajasthan, Punjab, Haryana and Odisha.
- **Week 2 (18.07.2025 to 24.07.2025):** Rainfall is likely to be above normal over Central India, East Rajasthan, Odisha, Coastal Andhra Pradesh and Kerala.

Maximum and Minimum temperature anomaly (°C) forecast

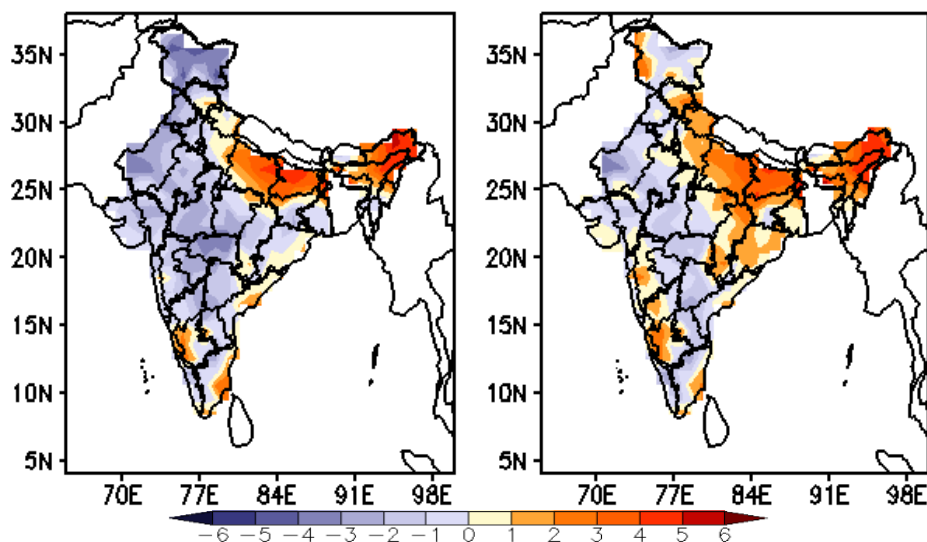
for the next 2 weeks (IC- 09th July, 2025)

(11th to 24th July, 2025)

MME forecast Tmax anomaly (Deg C)

(Week1: 11Jul–17Jul)

(Week2: 18Jul–24Jul)



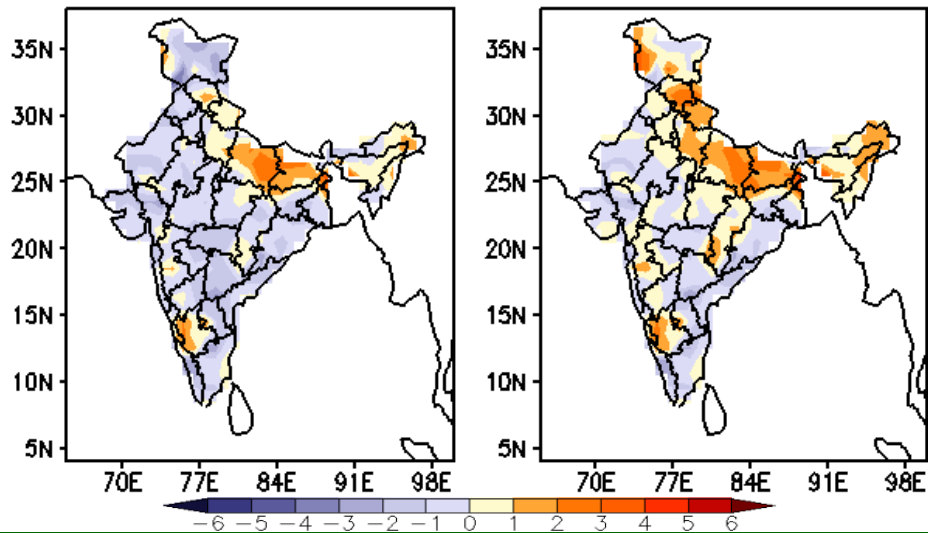
Maximum Temperature (Tmax)

- **Week 1 (11.07.2025 to 17.07.2025):** Maximum temperature is likely to be above normal over Bihar, East Uttar Pradesh, many parts of North East India, some parts in South Karnataka and coastal regions of Tamil Nadu and Coastal Andhra Pradesh.
- **Week 2 (18.07.2025 to 24.07.2025):** Maximum temperature is likely to be above normal over East India, North East India, Himachal Pradesh, Uttarakhand, Uttar Pradesh, Chhattisgarh, Karnataka, Madhya Maharashtra and coastal regions of Tamil Nadu.

MME forecast Tmin anomaly (Deg C)

(Week1: 11Jul–17Jul)

(Week2: 18Jul–24Jul)



Minimum Temperature (Tmin)

- **Week 1 (11.07.2025 to 17.07.2025):** Minimum temperature is likely to be below normal over most parts of the country except East Uttar Pradesh, Bihar and South Karnataka.
- **Week 2 (18.07.2025 to 24.07.2025):** Minimum temperature is likely to be above normal over North East India, Himachal Pradesh, Uttarakhand, Uttar Pradesh, Bihar, Chhattisgarh and South Karnataka.